

KTSL7517



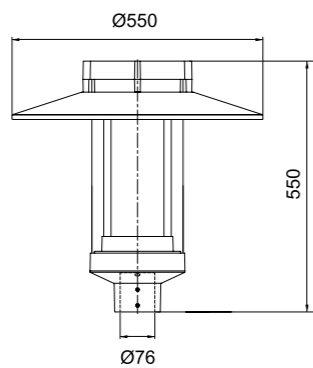
产品说明：

铝压铸外壳，铝板旋压灯罩
 光学级 PMMA 灯罩
 整体密封结构
 二次配光技术
 配 NEMA 接口

Product description:

Die cast aluminum housing, Aluminum sheet rotating cover
 Optical grade PMMA lamp shades
 Sealed lamp housing
 Double photometric diffuser technology
 Equipped with NEMA socket

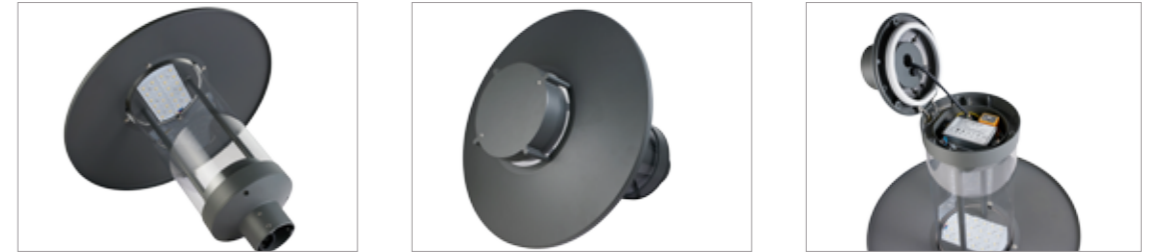
灯具尺寸 Product Dimensions(mm)



配置数据 / Configuration Data:

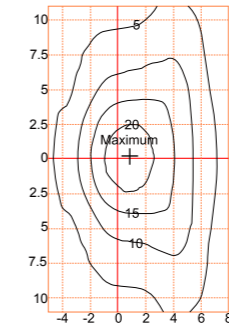
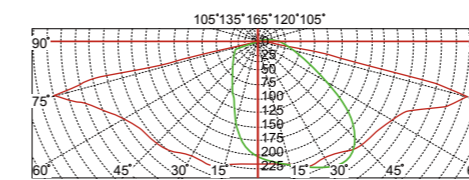
产品型号 Product Code	额定功率 Rated Power	LED 颗数 LED Qty	初始光通量 Luminous Flux	毛净重 G.W/N.W	包装尺寸 Packing Size	装柜数量 Loading Qty
KTSL7517-20(12)	20W	12	2320	7.5/6.5(kgs)		
KTSL7517-30(16)	30W	16	3480	7.5/6.5(kgs)	580x265x265mm 1PCS/CTN	480PCS/20'GP
KTSL7517-40(20)	40W	20	4640	7.5/6.5(kgs)	590x590x100mm 3PCS/CTN	1170PCS/40'HQ
KTSL7517-55(24)	55W	24	6380	7.5/6.5(kgs)		

Led Garden Lighting / 庭院灯

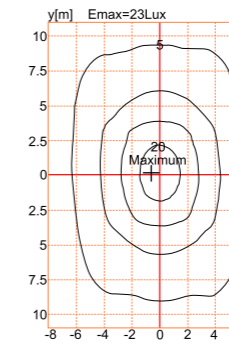
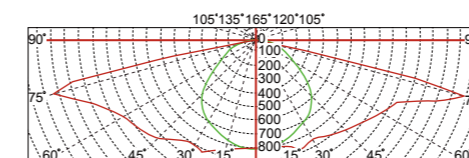


配光曲线 Polar Diagram

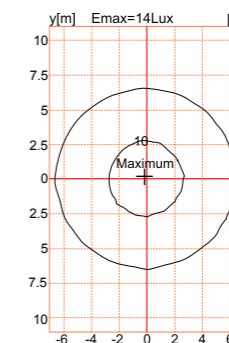
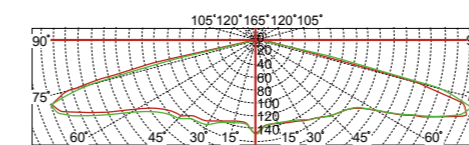
Type1



Type2



Type3



参考颜色 Reference color : RAL 9005 RAL 7015